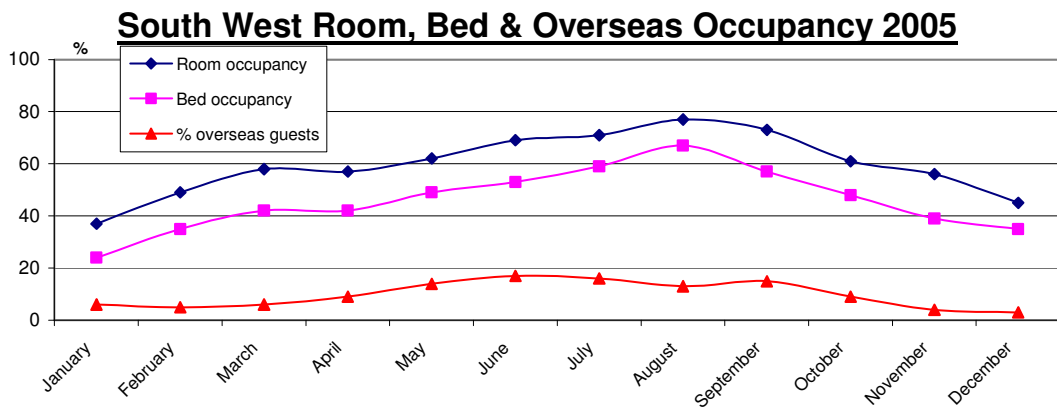


## South West Summary Sheet 2005 Serviced Accommodation Results

<b>Room Occupancy %</b>	January	February	March	April	May	June	July	August	September	October	November	December
Unitaries	50	67	62	61	67	71	70	73	75	71	68	51
Cornwall	34	43	58	55	65	73	75	80	75	60	49	39
Devon	27	38	43	56	59	68	70	79	69	57	53	43
Gloucestershire	40	52	54	53	62	61	61	63	66	60	53	45
Somerset	38	42	51	53	58	66	69	72	65	54	47	37
Wiltshire	52	64	66	67	60	69	73	58	61	66	65	52
Dorset	39	52	43	57	64	71	74	82	77	64	58	51
<b>Region</b>	<b>37</b>	<b>49</b>	<b>58</b>	<b>57</b>	<b>62</b>	<b>69</b>	<b>71</b>	<b>77</b>	<b>73</b>	<b>61</b>	<b>56</b>	<b>45</b>



<b>Bed Occupancy %</b>	January	February	March	April	May	June	July	August	September	October	November	December
Unitaries	21	48	32	41	46	51	54	58	57	48	37	36
Cornwall	25	34	49	45	51	63	64	70	63	49	35	32
Devon	20	33	35	44	44	51	63	72	59	50	43	37
Gloucestershire	29	39	43	39	47	45	48	51	50	46	37	34
Somerset	24	27	32	34	41	47	50	57	52	40	31	27
Wiltshire	27	34	32	39	43	46	48	46	44	41	34	28
Dorset	28	37	36	41	46	53	57	69	56	47	41	37
<b>Region</b>	<b>24</b>	<b>35</b>	<b>42</b>	<b>42</b>	<b>49</b>	<b>53</b>	<b>59</b>	<b>67</b>	<b>57</b>	<b>48</b>	<b>39</b>	<b>35</b>

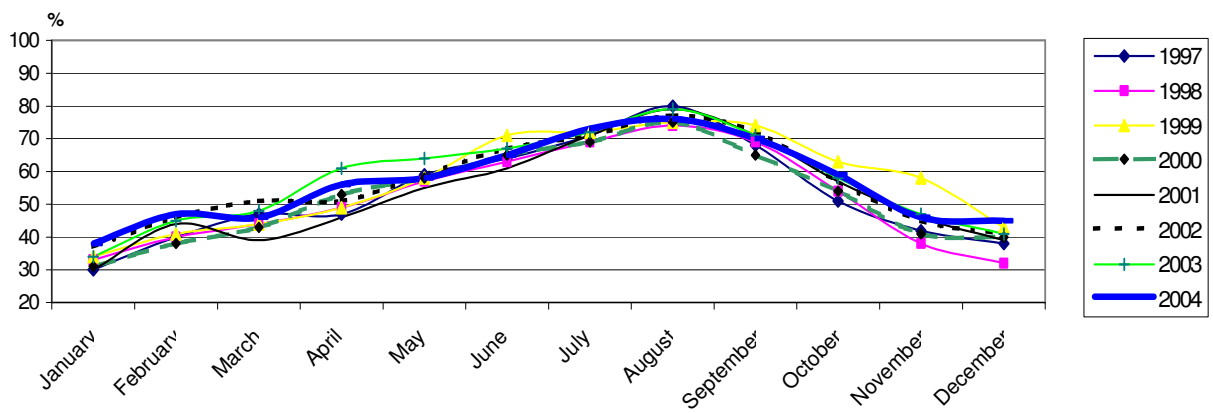
<b>Overseas Guests %</b>	January	February	March	April	May	June	July	August	September	October	November	December
Unitaries	10	10	14	9	15	25	19	14	17	10	8	5
Cornwall	4	1	3	13	15	18	16	14	12	9	1	1
Devon	*	*	*	*	*	*	*	*	*	*	*	*
Gloucestershire	6	5	9	9	21	25	23	19	20	11	7	4
Somerset	5	4	12	9	9	10	11	8	15	8	5	3
Wiltshire	10	14	8	15	21	21	22	24	19	16	5	12
Dorset (part)	5	3	3	4	6	8	9	7	9	4	2	1
<b>Region</b>	<b>6</b>	<b>5</b>	<b>6</b>	<b>9</b>	<b>14</b>	<b>17</b>	<b>16</b>	<b>13</b>	<b>15</b>	<b>9</b>	<b>4</b>	<b>3</b>

<b>Room Occupancy by size of Establishment %</b>	January	February	March	April	May	June	July	August	September	October	November	December
100+	56	69	66	69	76	66	75	76	79	71	77	56
51-100	37	50	58	64	64	58	75	83	81	64	62	52
26-50	35	47	55	60	66	55	72	78	75	64	54	44
11-25	30	39	42	49	59	42	68	72	73	59	44	39
4-10	27	32	37	40	52	37	67	74	54	47	36	31

**Room  
Occupancy  
Region**

%	January	February	March	April	May	June	July	August	September	October	November	December
<b>1997</b>	30	40	47	47	59	64	71	80	68	51	42	38
<b>1998</b>	33	40	44	49	57	63	69	74	69	54	38	32
<b>1999</b>	34	41	44	49	58	71	72	75	74	63	58	43
<b>2000</b>	31	38	43	53	58	65	69	75	65	54	41	40
<b>2001</b>	30	44	39	46	55	61	71	79	71	57	46	39
<b>2002</b>	37	46	51	51	59	67	71	77	72	57	45	41
<b>2003</b>	34	45	48	61	64	67	72	79	71	58	47	41
<b>2004</b>	38	47	46	56	58	65	73	76	70	59	46	45
<b>2005</b>	37	49	58	53	62	62	71	77	73	73	56	45

### % Room Occupancy 1997-2004

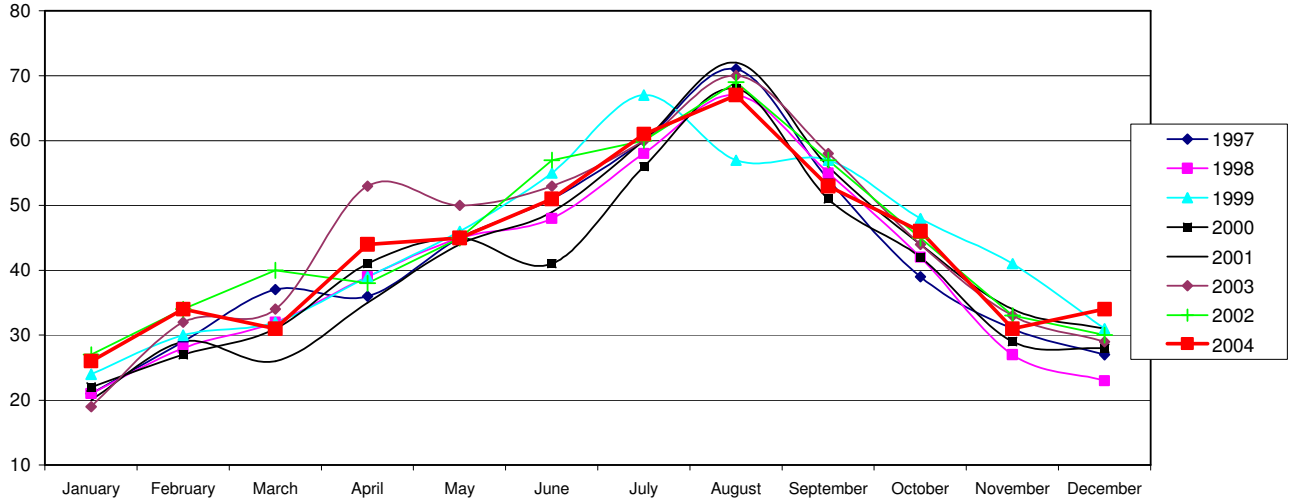


**Bed  
Occupancy  
Region**

%	January	February	March	April	May	June	July	August	September	October	November	December
<b>1997</b>	21	29	37	36	45	51	60	71	54	39	31	27
<b>1998</b>	21	28	32	39	45	48	58	67	55	42	27	23
<b>1999</b>	24	30	32	39	46	55	67	57	57	48	41	31
<b>2000</b>	22	27	31	41	45	41	56	68	51	42	29	28
<b>2001</b>	20	29	26	35	44	49	60	72	56	44	34	31
<b>2002</b>	27	34	40	38	45	57	60	69	57	45	33	30
<b>2003</b>	19	32	34	53	50	53	60	70	58	44	33	29
<b>2004</b>	26	34	31	44	45	51	61	67	53	46	31	34
<b>2005</b>	24	35	42	42	49	46	59	67	57	48	39	35

%

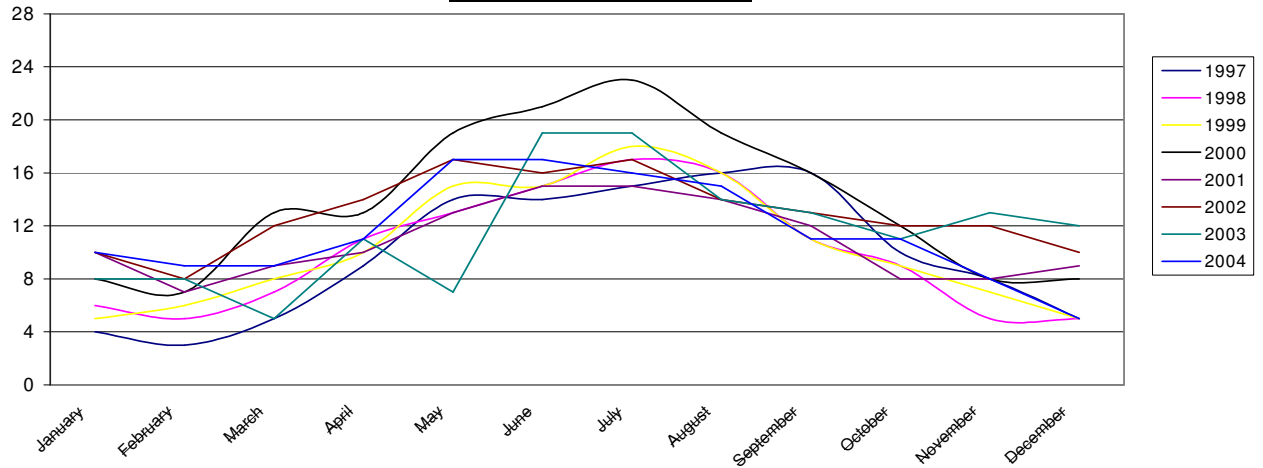
**% Bed Occupancy 1997-2004**



**% Overseas Guests**

	January	February	March	April	May	June	July	August	September	October	November	December
<b>1997</b>	4	3	5	9	14	14	15	16	16	10	8	5
<b>1998</b>	6	5	7	11	13	15	17	16	11	9	5	5
<b>1999</b>	5	6	8	10	15	15	18	16	11	9	7	5
<b>2000</b>	8	7	13	13	19	21	23	19	16	12	8	8
<b>2001</b>	10	7	9	10	13	15	15	14	12	8	8	9
<b>2002</b>	10	8	12	14	17	16	17	14	13	12	12	10
<b>2003</b>	8	8	5	11	7	19	19	14	13	11	13	12
<b>2004</b>	10	9	9	11	17	17	16	15	11	11	8	5
<b>2005</b>	6	5	6	9	14	17	16	13	15	9	4	3

**% Overseas Guests**



For further information, please contact:

**Louise Maddocks, South West Tourism, Woodwater Park, Exeter. EX2 5WT** Direct Tel:01392 353227 or E-mail [lmaddocks@swtourism.co.uk](mailto:lmaddocks@swtourism.co.uk)  
 This survey is undertaken by SouthWest Tourism